



CAD/CAM

# Block Overview

Block-Übersicht



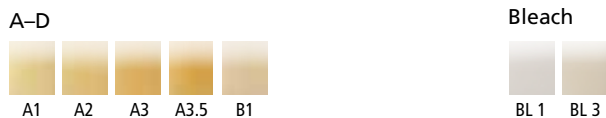
# IPS Empress® CAD

Leucite-reinforced glass-ceramic | Leuzitverstärkte Glaskeramik

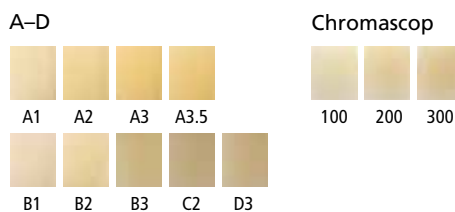
## Multi



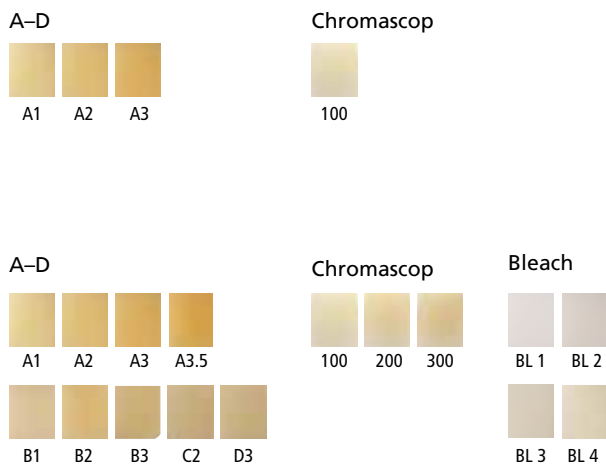
## Shades | Farben



## HT (High Translucency)



## LT (Low Translucency)



## Indications | Indikationen

Veneers, inlays, onlays, partial crowns, single crowns

Veneers, Inlays, Onlays, Teilkronen, Einzelzahnkronen



# IPS e.max<sup>®</sup> CAD

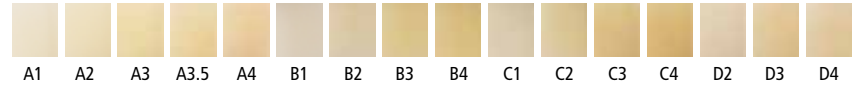
Lithium disilicate (LS<sub>2</sub>) glass-ceramic | Lithium-Disilikat (LS<sub>2</sub>) Glaskeramik

## HT (High Translucency)



### Shades | Farben

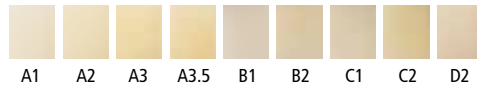
A-D



Bleach



A-D



Bleach



## MT (Medium Translucency)



A-D



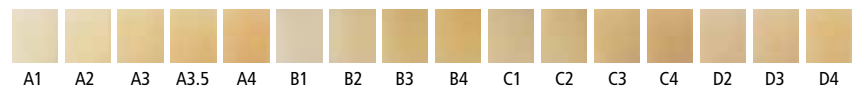
Bleach



## LT (Low Translucency)



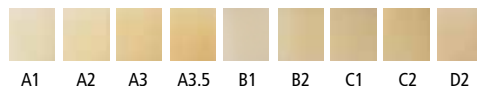
A-D



Bleach



A-D



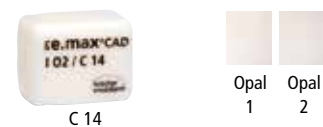
Bleach



## MO (Medium Opacity)



## Impulse



## Indications | Indikationen

Thin veneers, veneers, inlays, onlays, partial crowns, crowns, multiple-unit bridges (IPS e.max CAD-on technique in combination with IPS e.max ZirCAD), hybrid abutment, hybrid abutment crowns, 3-unit-bridge (up to the second premolar as the terminal abutment)

Dünne Veneers, Veneers, Inlays, Onlays, Teilkronen, Einzelzahnkronen, mehrgliedrige Brücken (IPS e.max CAD-on Technik in Kombination mit IPS e.max ZirCAD), Hybrid-Abutment, Hybrid-Abutment-Kronen, 3-gliedrige Brücken (bis zum zweiten Prämolaren als endständigen Pfeiler).



# IPS e.max® ZirCAD

Yttrium-stabilized zirconium oxide (ZrO<sub>2</sub>) | Yttrium-stabilisiertes Zirkoniumoxid (ZrO<sub>2</sub>)

## MO (Medium Opacity)

## Shades | Farben



C 13



C 15



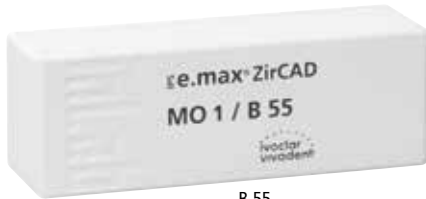
C 15 L



B 40



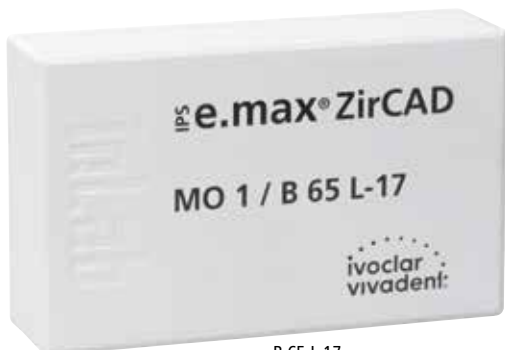
B 40 L



B 55



B 65



B 65 L-17



B 85 L-22

## Indications | Indikationen

Crown frameworks, interlocked crown frameworks, multiple-unit bridge frameworks

Kronengerüste, verblockte Kronengerüste, mehrgliedrige Brückengerüste



# Telio® CAD

Polymethyl methacrylate  
Polymethylmethacrylat

## LT (Low Translucency)



A 16



B 40 L



B 55

## Shades | Farben

A-D



A1 A2 A3 A3.5 B1

Bleach



BL 3

## Indications | Indikationen

Temporary crowns and bridges with no more than 2 pontics, temporary restorations on implants, temporary hybrid abutment crowns, therapeutic restorations to correct TMJ and occlusal problems (max. 12 month)

Temporäre Kronen und Brücken (max. 2 Brückenglieder am Stück), Implantatprovisorien, temporäre Hybrid-Abutment-Kronen, therapeutische Versorgung bei Korrektur von Kiefergelenksproblemen und der Kau-Ebene (max. 12 Monate)

# IPS AcrylCAD®

Acrylate polymer  
Acrylatpolymer



B 40 L

## Indications | Indikationen

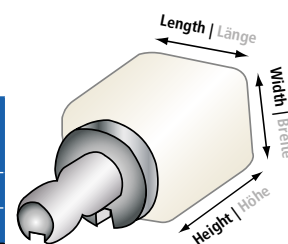
IPS AcrylCAD is a blue burn-out resin block for the automated fabrication of resin patterns (frameworks, full-contour restorations, overstructures for the press-on technique), which would normally be fabricated with modelling wax.

IPS AcrylCAD ist ein blau eingefärbter, ausbrennbarer Kunststoffblock für die automatisierte Herstellung von Formteilen (Gerüsten, vollanatomischen Restaurationen, Überpress-Anteilen), die sonst konventionell mit Modellierwachs hergestellt werden.

# Ivoclar Vivadent

## Block Dimensions

### Block-Dimensionen



IPS Empress® CAD				
Abbreviation   Abkürzung	IPS Empress CAD	Size   Grösse in mm		
		Width   Breite	Length   Länge	Height   Höhe
Inlay	I 8	8.0	8.0	15.0
Inlay	I 10	8.5	10.0	15.0
Inlay	I 12	10.0	12.0	15.0
Crown	C 14	12.0	14.0	18.0
Crown	C 14 L	14.4	14.4	18.0

IPS e.max® CAD				
Abbreviation   Abkürzung	IPS e.max CAD	Size   Grösse in mm		
		Width   Breite	Length   Länge	Height   Höhe
Inlay	I 12	10.4	12.5	15.0
Crown/Abutment	C 14 / A14	12.4	14.5	18.0
Crown/Abutment	C 16 / A16	17.8	15.8	18.0
Bridge	B 32	14.5	14.5	32.0
Bridge	B 40	15.2	15.2	38.0
Bridge	B 40 L	15.9	17.9	40.0

IPS e.max® ZirCAD				
Abbreviation   Abkürzung	IPS e.max ZirCAD	Size   Grösse in mm		
		Width   Breite	Length   Länge	Height   Höhe
Crown	C 13	13.2	13.2	14.0
Crown	C 15	14.5	15.5	18.5
Crown	C 15 L	15.4	19.0	20.0
Bridge	B40	14.2	15.5	40.0
Bridge	B 40 L	15.4	19.0	39.0
Bridge	B 55	15.5	19.0	55.0
Bridge	B 65	22.0	25.0	65.0
Bridge	B 65 L-17	17.0	40.0	65.0
Bridge	B 85 L-22	22.0	40.0	85.0

Telio® CAD   IPS AcrylCAD®					
Abbreviation   Abkürzung	Telio CAD	IPS AcrylCAD	Size   Grösse in mm		
			Width   Breite	Length   Länge	Height   Höhe
Abutment	A 16	–	17.8	15.8	18.0
Bridge	B 40 L	B 40 L	15.4	19.0	39.0
Bridge	B 55	–	15.5	19.0	55.0

Date information prepared: 2016-01/Rev. 3

[www.ivoclarvivadent.com](http://www.ivoclarvivadent.com)

Ivoclar Vivadent AG

Benderstr. 2 | 9494 Schaan | Liechtenstein | Tel. +423 235 35 35 | Fax +423 235 33 60

ivoclar  
vivadent®  
passion vision innovation